

Lacy Pinafore

1990s Crochet Pattern



SIZES: Toddlers' size 2(4-6). Garment fits body chest measurement of 21(23-24)".

MATERIALS: J. & P. Coats "Knit-Cro-Sheen" (150 yd. balls)—3(4-4) balls color No. 1 White. Steel crochet hook No. 6, OR SIZE NEEDED TO OBTAIN GAUGE. Two yards pink double-face satin ribbon, $\frac{3}{8}$ "-wide. Five buttons, $\frac{1}{2}$ " in diameter. Yarn needle.
GAUGE: 4 mesh = 1".

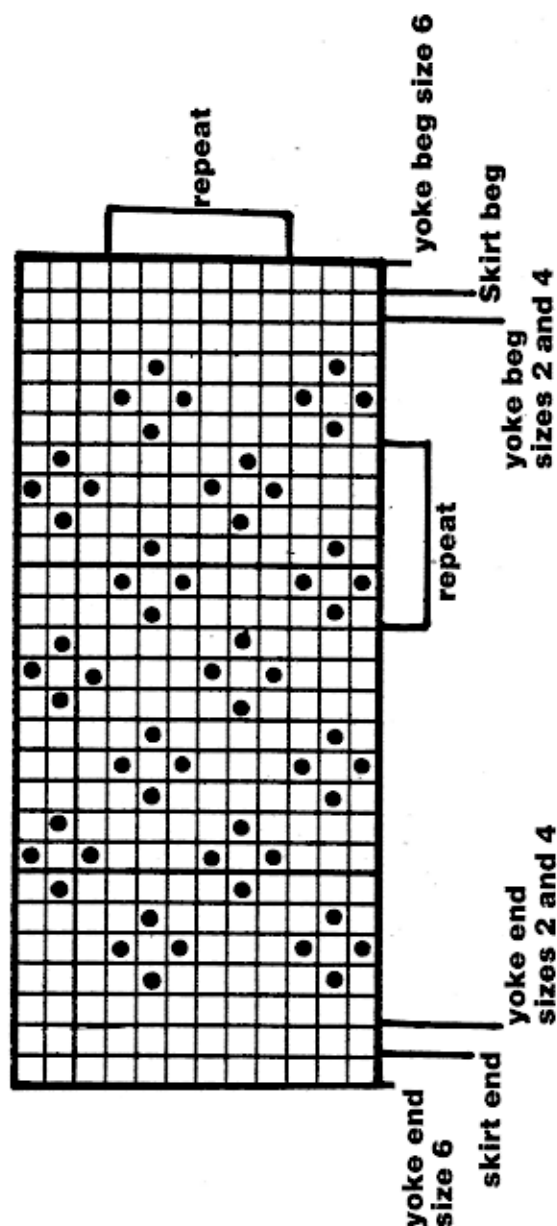
FRONT SKIRT: Ch 176(188-194).

Base Row: Dc in fifth ch from hook, * ch 1, skip 1 ch, dc in next ch; repeat from * across—85(91-97) open mesh.

Turn. **Row 1:** Sl st in first dc, ch 4 for first dc and ch 1, (dc in next dc, ch 1) twice, dc in next dc, dc in ch-1, dc in next dc—filled mesh over open mesh completed, * (ch 1, dc in next dc) 5 times, dc in ch-1, dc in next dc—another filled mesh completed; repeat from * across, end with 3 open mesh—Row 1 of chart completed.

Turn. **Row 2:** Sl st in first dc, ch 4 for first dc and ch 1, dc in next dc, ch 1, dc in next dc, * work 1 filled mesh, ch 1, skip 1 dc, dc in next dc—open mesh over filled mesh completed, 1 filled mesh, 3 open mesh; repeat from * across, end 2 open mesh—Row 2 of chart completed. Turn. (**Note:** When following chart, at beg of each row, sl st in first dc, ch 4 for first dc and ch 1.) **Row 3:** Work 3 open mesh, * 1 filled mesh, 5 open mesh; repeat from * across, end 3 open mesh. Continue following chart as established until about 7(8-9)" from beg.

Shape Armholes: Sl st across 3 mesh, work in pattern across, leave last 3



mesh unworked—6 mesh dec. Turn. **Next 5 Rows:** Sl st across 1 mesh, work in pattern across, leave last mesh unworked—1 mesh dec each edge. At end of last row, fasten off.

BACK SKIRT: Make two pieces. Ch 91(103-103). Work in pattern same as front until same length as Front Skirt to armhole shaping. Working on one side only, shape armhole same as before; keep opposite edge

straight for back opening. When same length as Front Skirt, fasten off.

FRONT YOKE: Ch 63(75-83). **Base Row:** Work same as Front Skirt—58(70-78) mesh. Begin following chart at size indicated and work until 9(11-12) rows from beg.

Shape Neck: Keeping to pattern as established, work across 9(11-12) mesh; leave remainder of row unworked.

Next Row: Dec 1 mesh at beg of row, work in pattern across. Turn.

Shape Shoulder: Sl st in first 2 sts, ch 1, beg with next dc, work in pattern across, leave last mesh unworked at neck edge. Fasten off. Count over 9(11-12) mesh from opposite side of yoke, join thread and complete remaining side of Yoke to correspond, reversing shaping.

BACK YOKE: Make two pieces. Ch 37(41-47). work same as Front Yoke—16(18-21) mesh. Begin following chart at size indicated until same length as Front Yoke to neck shaping. Working on one side only, shape neck same as Front Yoke; leave other edge straight for back opening. work until same length as Front Yoke.

FINISHING: Sew Skirt Front and Back at sides only; leave center back open. Thread yarn needle with double strand of crochet thread. Weave thread through top of front skirt between armholes; adjust gathering to same width as Front Yoke. Sc evenly across Skirt Front between armholes to secure gathering in place. Work top of Skirt Back the same on both sides. Sew yoke to top of skirt on front and back. Sew shoulder seams of yoke.

Yoke Ruffle—Base Row: With top

of yoke turned toward you, join thread in Base Row, ch 4 for first dc and ch 1, dc in same space, ch 1, * in next space work (dc, ch 1,) twice *; repeat from * to * to corner, in corner work (dc, ch 1) 6 times; repeat from * to next corner, work corner as before, continue across front as established, work corner, work across side, work corner, work across remainder of back. Turn. **Row 1:** Begin working chart at size indicated for Yoke; work in pattern across. **Rows 2 and 3:** Work chart as established. Cut thread.

Bottom Ruffle—Row 1: Right side facing, with dress turned to work across bottom edge, join thread in first st, ch 4 for first dc and ch 1, * ** in next dc work (dc, ch1) twice; repeat from * once more, dc in next dc, ch 1; repeat from * across, end dc in last dc. **Row 2:** Sl st in first dc, ch 4 for first dc and ch 1, * dc in next dc, ch 1; repeat from * across. **Next 3 Rows:** Following chart for “Skirt,” work 3 rows following chart. **Last Row:** Ch 4 for first dc and ch 1, * dc in next dc, ch 1; repeat from * across, end dc in last st. Fasten off.

Armhole Border: Right side facing, join thread at underarm beneath Yoke Ruffle, sc evenly across to other side of ruffle.

Back and Neck Border: Right side facing, with dress turned to work up back opening, join thread in first st, sc evenly to neck, 3 sc in corner, sc evenly around neck, 3 sc at corner, sc evenly down remaining back edge. Fasten off.

Bows: Cut ribbon into nine equal lengths; tie bow with each piece. Sew bow to corners of Yoke at both front and back. Sew three bows evenly spaced across front at top of bottom

ruffle; sew one bow at center of each center back panel at top of ruffle.

Buttons: Sew one button at top back of neck, another 1½" up from bottom

edge, the remaining three evenly spaced between. Use open mesh for buttonholes.