

CAT HOT PAD

1980s Crochet Pattern



Abbreviations

beg.....	begin(ing)	rnd(s).....	round(s)
ch.....	chain	sc.....	single crochet
dc.....	double crochet	sk.....	skip
dec.....	decrease	sl st.....	slip stitch
dtr.....	double treble crochet	sp(s).....	space(s)
hdc.....	half double crochet	st(s).....	stitch(es)
".....	inch(es)	tog.....	together
inc.....	increase	tr.....	treble crochet
lp(s).....	loop(s)	trtr.....	treble treble crochet
rem.....	remain(ing)	yo.....	yarn over
rep.....	repeat	MC.....	main color
		CC.....	contrasting color

MATERIALS:

4-ply yarns in
3 oz gray ombre
1 oz tan

Small amounts of 4-ply yarn in
brown
red

Crochet hook size G/6 (4.50mm)

GAUGE: 4 sc = 1"; 4 rows sc = 1"

FINISHED SIZE: 9" × 11"

NOTE: To change colors, work sc to last 2 lps of st, drop 1st color, pull 2nd color through last 2 lps of sc.

FRONT

Row 1: With ombre yarn, ch 33, sc in 2nd ch from hook, sc in each rem ch across, ch 1, turn. (32)

Row 2: Sc in each sc across, ch 1, turn.

Rows 3-16: Working in sc, follow chart for tail.

Rows 17-23: Rep Row 2.

Row 24: Sc across to within last 2 sts, dec 1 sc over next 2 sts, ch 1, turn. (31)

Row 25: Dec 1 sc over next 2 sc, sc across, ch 1, turn. (30)

Rows 26 & 27: Rep Rows 24 and 25. (29)(28)

Row 28: Sc in next 19 sts, ch 1, turn. (19)

Rows 29-40: Working in sc, follow chart for cats face.

Rows 41 & 42: Rep Row 2.

Rows 43: (First ear) Sc in next 6 sc, ch 1, turn. (6)

Rows 44 & 45: Rep Row 2.

Row 46: Dec 1 sc over next 2 sc, sc in next 2 sc, dec 1 sc over next 2 sc, ch 1, turn. (4)

Row 47: (Dec 1 sc over next 2 sc) twice, ch 1, turn. (2)

Row 48: Dec 1 sc over next 2 sc, fasten off. (1)

For 2nd ear, attach ombre yarn with sc in 6th st away from other end of Row 42, sc in next 5 sts, ch 1, turn. (6)

Rep Rows 44-48 as for first ear.

BACK

Working with ombre yarn, work entire piece in only ombre yarn, ch 33.

Row 1: Sc in 2nd ch from hook, sc in each rem ch across, ch 1, turn. (32)

Rows 2-23: Sc in each sc across, ch 1, turn.

Rows 24-27: Rep Rows 24 and 25 of front. (28 sc at the end of Row 27)

Row 28: Rep Row 28 of front. (19)

Rows 29-42: Sc in each sc across, ch 1, turn.

Rows 43-48: Rep Rows 43-48 as for 1st and 2nd ear of front.

FINISHING

Matching the front and back of body with wrong sides together, attach ombre yarn, working through both thicknesses, sc around entire piece, having 3 sc in each outside corner and sk a st at each inside corner join, fasten off.

With red yarn, ch 60, fasten off. Weave through sts at bottom of face centered in Row 28 and pull ends to front. Knot each end of chain. Tie chain in a bow.

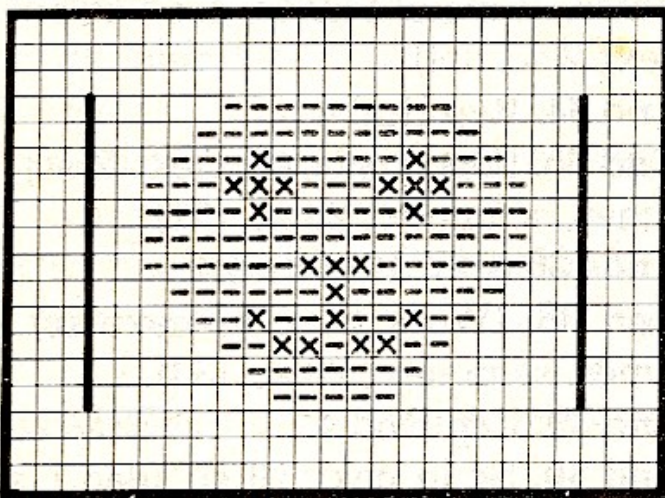
Whiskers

Weave 2-4" length of brown yarn through sts at nose.

GRAPHS

GRAPH FOR CAT'S FACE

Row 40

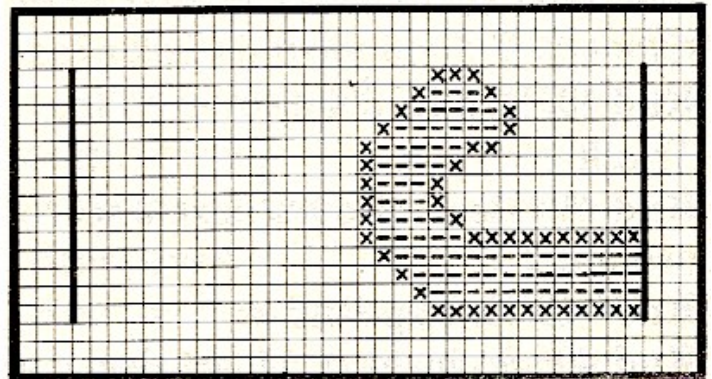


Row 29



-- = Tan
xx = Brown

Row 16



GRAPH FOR TAIL

Row 3